



S

K A

E
A

-

A S



K

R

M

S b e om lete Inte te

A aila it **S** Mat re

Fle ble Po ular Com onent

A S

2/52



T

An

No animal

An



Creatin



Beaut ▪ Portabilit ▪ Fun



Beaut ▪ Portabilit ▪ Fun



O

A b

H

:

S S)

Wi

Web

Mou

Au

W i m te :

Peo

U





O

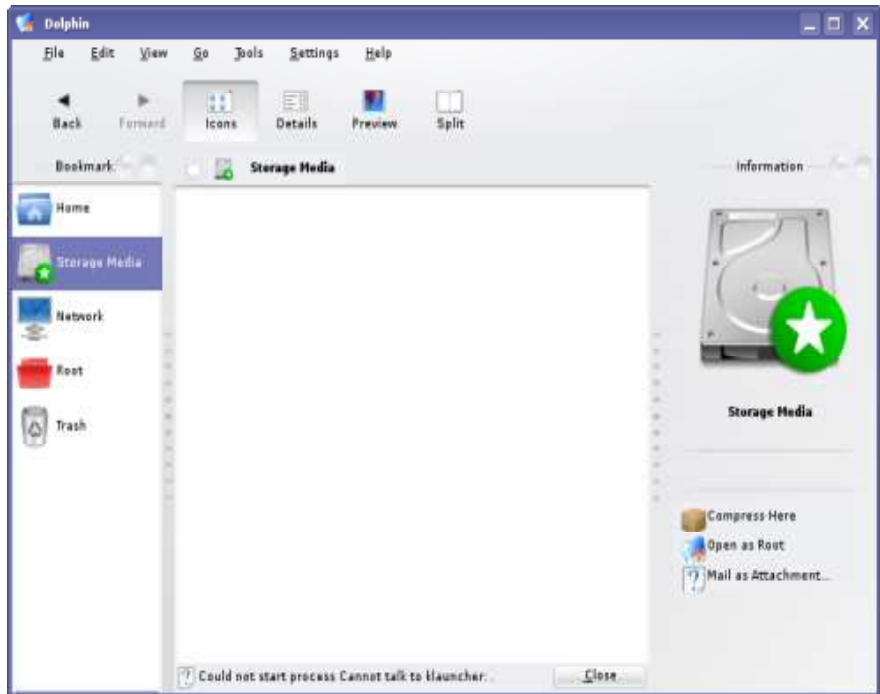
A b

System Monitor

Process Table

Name	User Name	CPU%	Memory	Shared Mem	Command
lsyncd	lsyncd	0%	1.4 MiB	13.8 MiB	lsyncd
KaPtych	lsyncd	0%	25.5 MiB	3.8 MiB	XaPtych
lsyncd	lsyncd	0%	7.3 MiB	14.3 MiB	lsyncd
konsole	lsyncd	1%	6.4 MiB	12.7 MiB	konsole
lsyncd	lsyncd	0.5%	2.8 MiB	10.1 MiB	lsyncd
kate	lsyncd	0.5%	5.9 MiB	14.5 MiB	kate
konsole	lsyncd	0.5%	4.8 MiB	18.3 MiB	konsole
dolphin	lsyncd	1%	5.2 MiB	15.5 MiB	dolphin
konsole	lsyncd	1%	1.4 MiB	13.1 MiB	konsole
lsyncd	lsyncd	1%	418.8 KiB	352.8 KiB	lsyncd
dbus-daemon	lsyncd		136.8 KiB	752.8 KiB	dbus-daemon
gdm-session	lsyncd		576.8 KiB	1,002.8 KiB	gdm-session
ksm	lsyncd		1.3 MiB	8.4 MiB	ksm
ksm	lsyncd		528.8 KiB	8.9 MiB	ksm
sh	lsyncd		11.2 KiB	404.8 KiB	sh
ksm	lsyncd		4.8 KiB	428.8 KiB	ksm
dbus-launch	lsyncd		4.8 KiB	492.8 KiB	dbus-launch

184 processes CPU: 24% Memory: 325.1 / 495.0 MiB Swap: 312.7 MiB / 1554.3 MiB





U



Hi :

Mo HI
Re

W :

U
Gui



U



A Sei

10/52



G

Hi :

Art

S

Gra



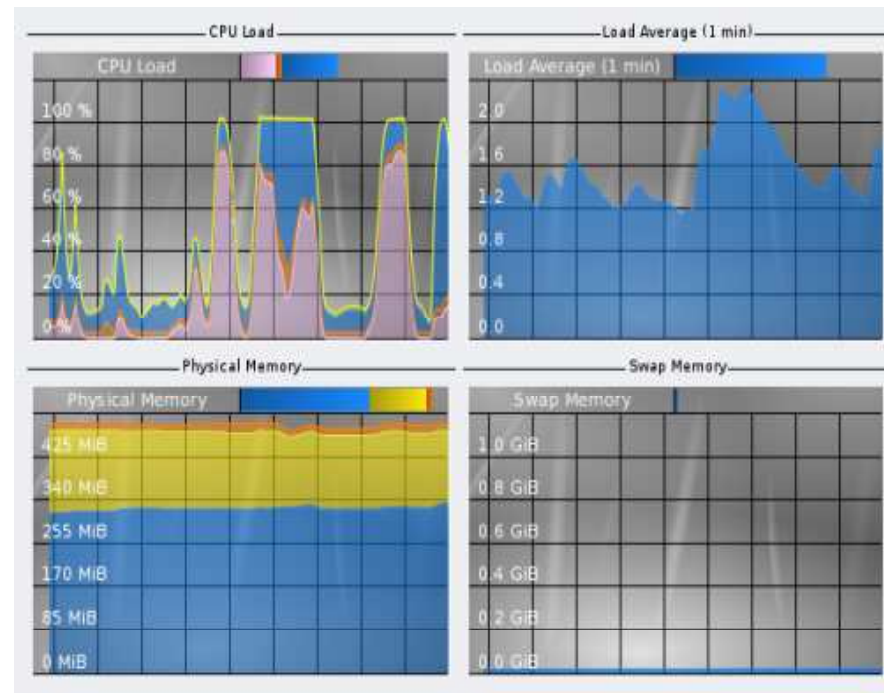
W :

Ma

Or



G





Beaut ▪ Portabilit ▪ Fun



W

I

Ma

K

O

Ma

K



P

De



P

O



P

U

A



P

	Librarie	Ba	A	
Li	✓	✓	✓	✓
Solari	✓	✓	✓	✓
BSD	✓	✓	✓	✓
*ni	✓	✓	⚠	⚠
Wi	✓	⚠	⚠	✗
M	✓	⚠	⚠	✗

A

Sei



St

D

Mimet

I

Sear meta

Pre

Noti

Job



Te

Wi Web
Partner Pro
De
S A
Inte

KDE TechBase WIKI

Article Discussion Edit History unprotect Delete Move Watch

Search

This site needs some love and you can help! [Migrate content](#), enhance or add [tutorials](#), fix typos...*(how?)*.

Welcome to KDE TechBase
(Link to this page as [[Main Page]])

Discover

- Setting up a KDE development environment**
Learn how to get, build and run KDE and its applications.
- Developing with KDE**
Tutorials | API Documentation | FAQs and more.
Related: Release Schedules and Feature Plans
- KDE System Administration**
Information for system administrators managing KDE deployments.

Interact

Navigation

- Main Page
- Help
- Recent changes

Sections

- Getting started
- Development
- Schedules
- Policies
- Contribute
- Projects

Toolbox

- What links here
- Related changes
- Upload file
- Special pages
- Printable version
- Permanent link



Beaut ▪ Portabilit ▪ Fun



A

A
Te
S
A





S i Har re awareness

Hi :

Plat

Ma

DBus)



W :

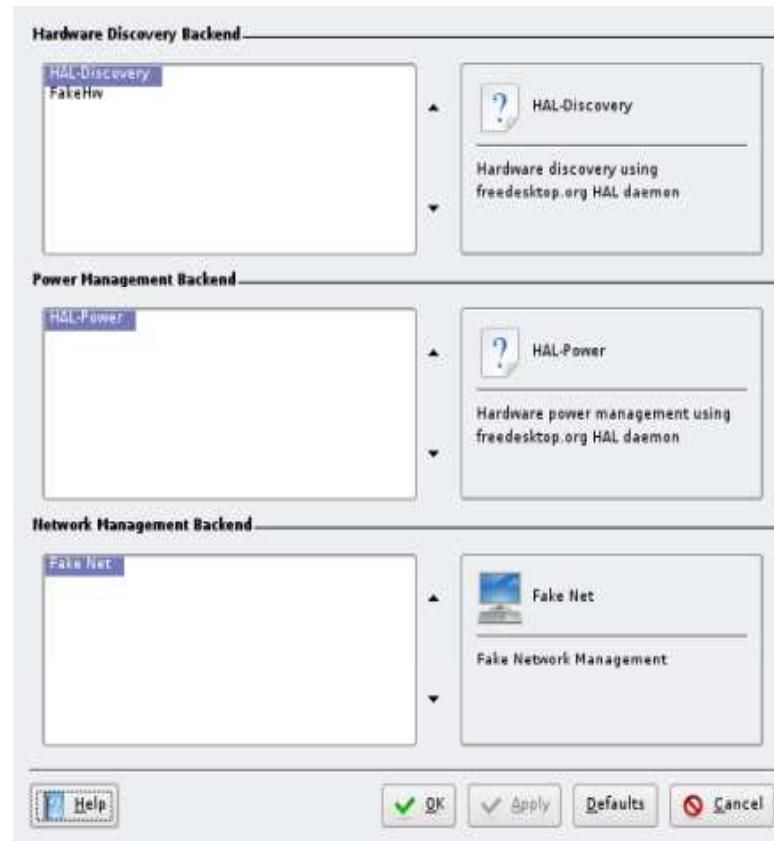
Users e

Future

Portable



S i Hardware awareness





P Des

Hi :

Plat

Co



API

W :

Multime

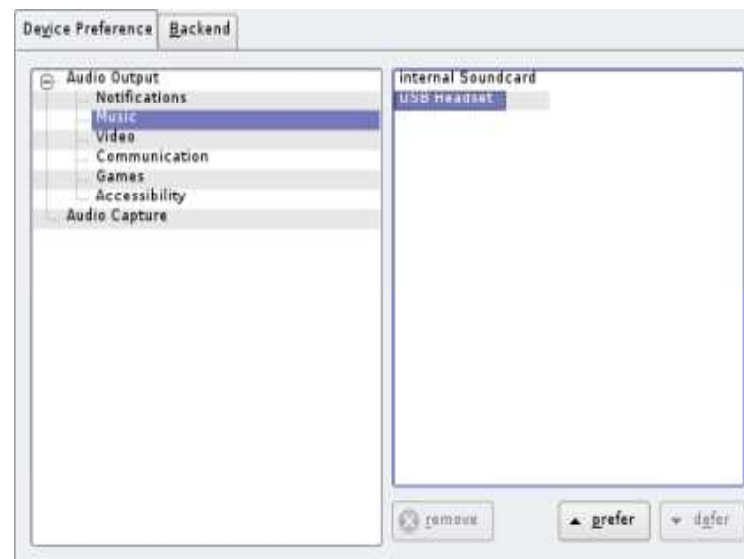
Future

Portable

API



Phonon Desktop multimedia





Pho

Des





De VOIP ser

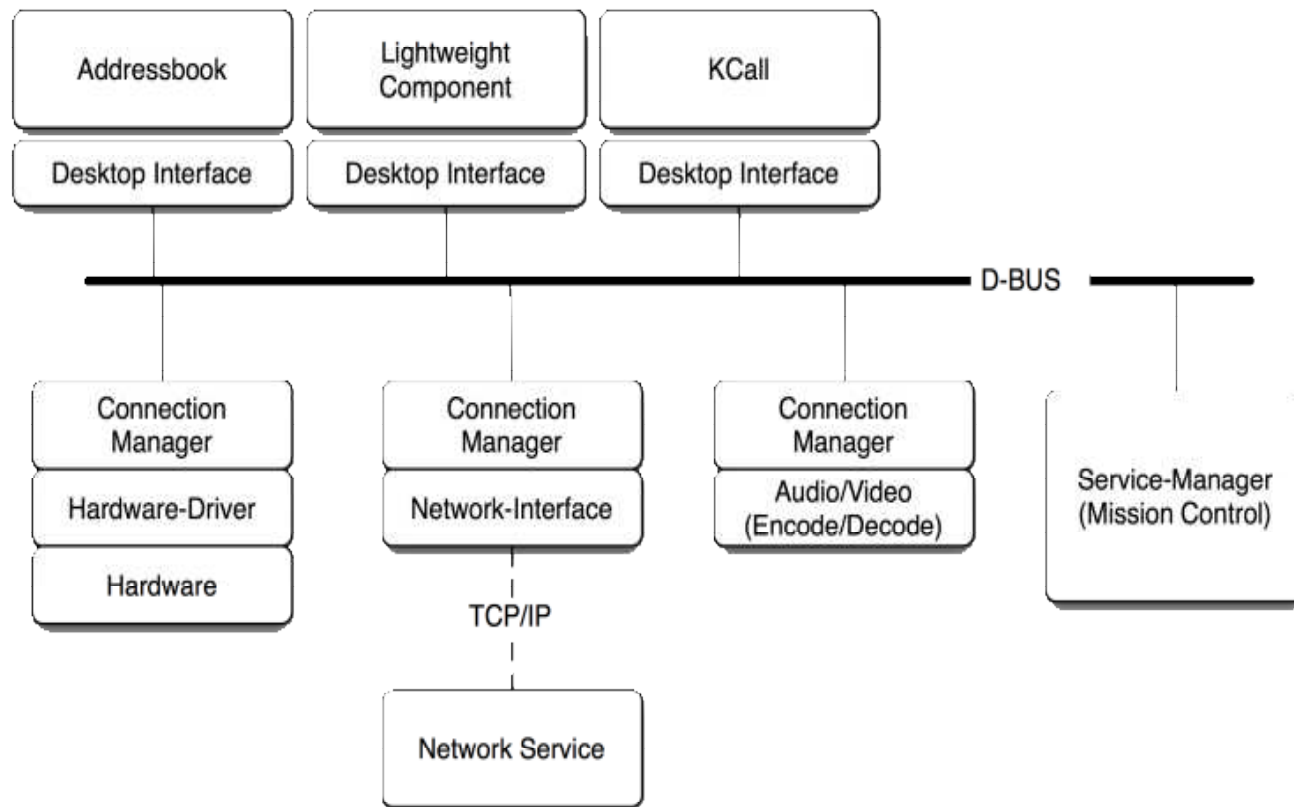
Hi :
Per VOIP and
Tapio

Wh :
VOIP is emer
0





De I VOIP service architecture





A Contacts and messa

Hi :

File

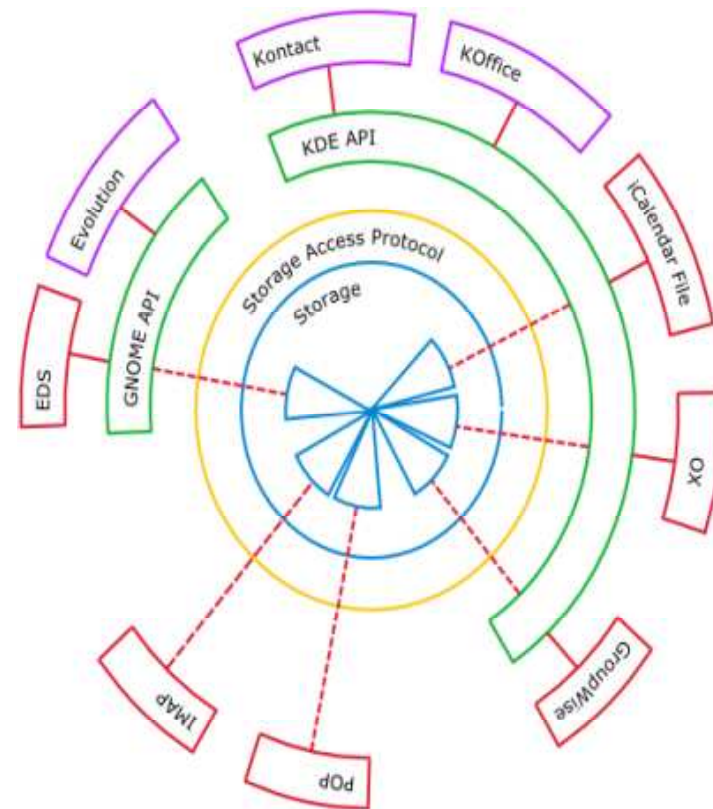
Scalable

S

Wh :

Computin

Coordination between apps is





So net :: Spellin nd grammar c c

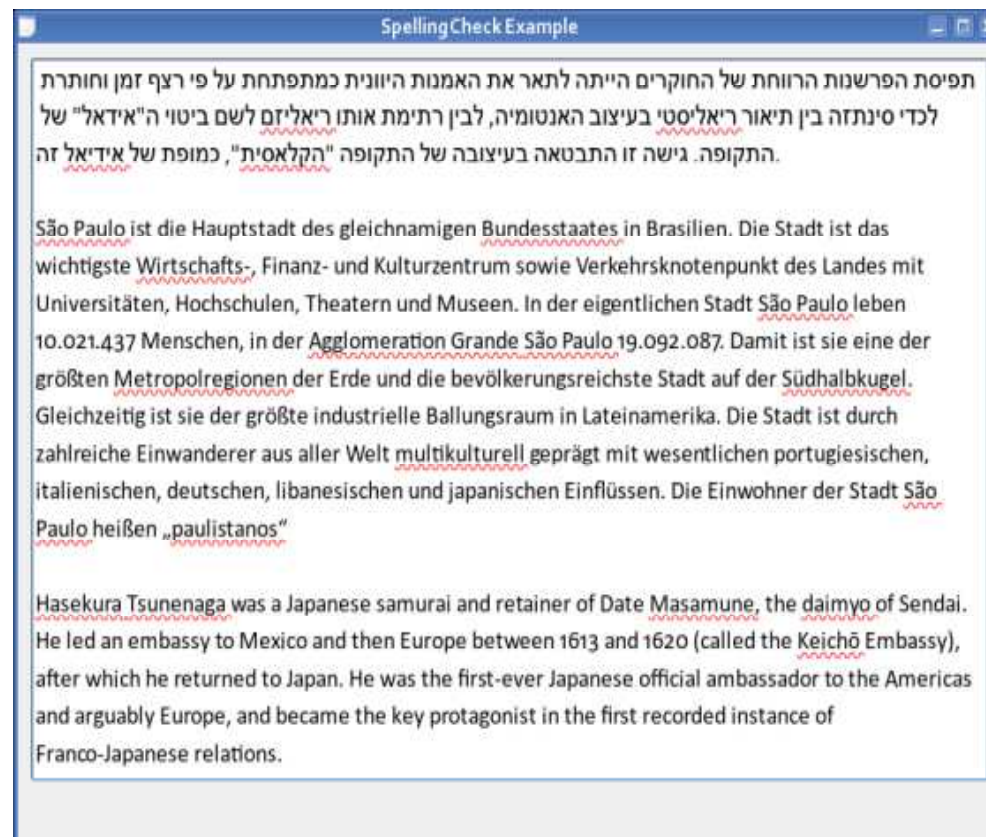
Hi :
Multi
Resource



Wh :
Speling is e !



Sonnet :: Spelling and grammar c c





K :: Application Automation

Hi :

Multi

Run time bindings



Wh :

Enables scripting o



K **ss** :: Application Automation

```
testob instances
TestOb * testob 3 TestOb ( TestOb 3
TestOb * testob 4 TestOb ( TestOb 4
```

```
Kross::Action* action Kross::Action( KUrl(script ))
action setInterpreter( interpretername )
action setCode( scriptcode )
```

```
testob instance to t
action addOb ( testob 3 )
action addOb ( testob 4 )
```

```
action
```



Th

☐☐ Eas

Hi :

Wor

Eas



Wh :

Multi

Better application responsi



St **i** :: Search and indexing

Hi :
F and lig weig
Uses D
Social semantic des



Wh :
Massi
Can be t basis r r a interesting applications



A

Introducing some new and impro



Pl sm Wor pace evolving

Hi :

First impression beaut

New concepts

Easil

Wh :

T

Organics!





PI

Wor





O **⚡** Universal document viewer

Hi :

11

Annotations

Optional DRM



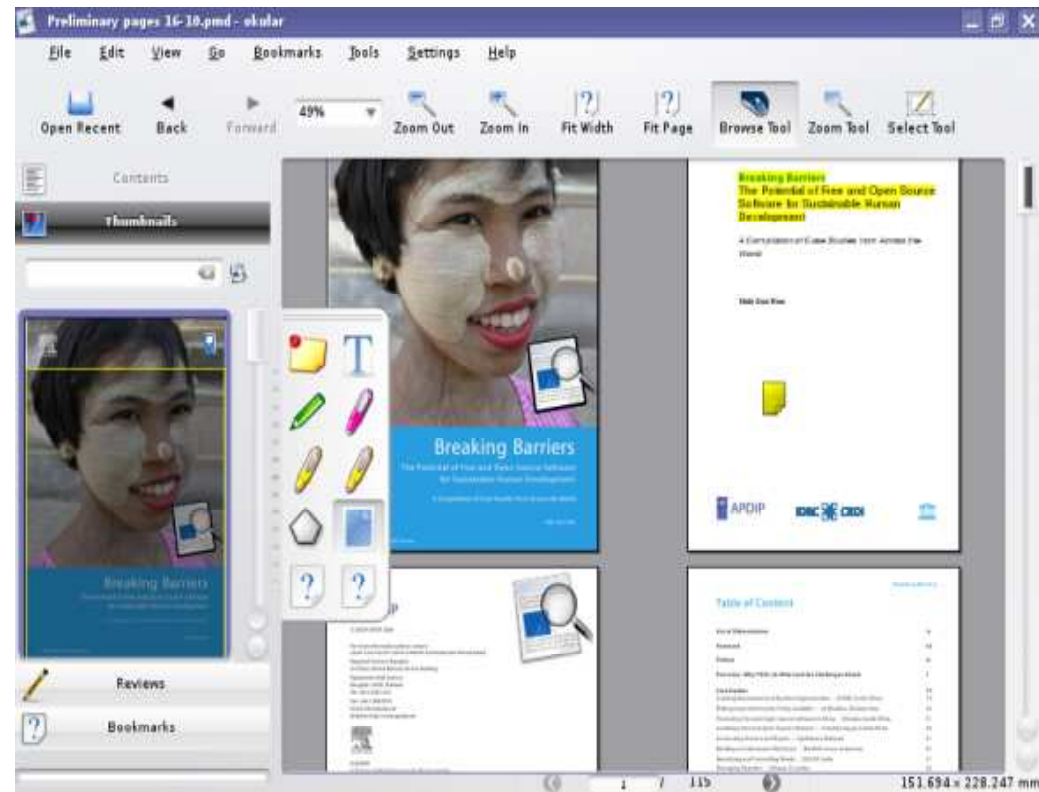
Wh :

Being able to read documents is critical to using a computer

W



Ok a :: Universal document viewer



A Sei

41/52



Dol File Management

Hi :
An emp
Extensible
Tagging and metadata
Compliments t

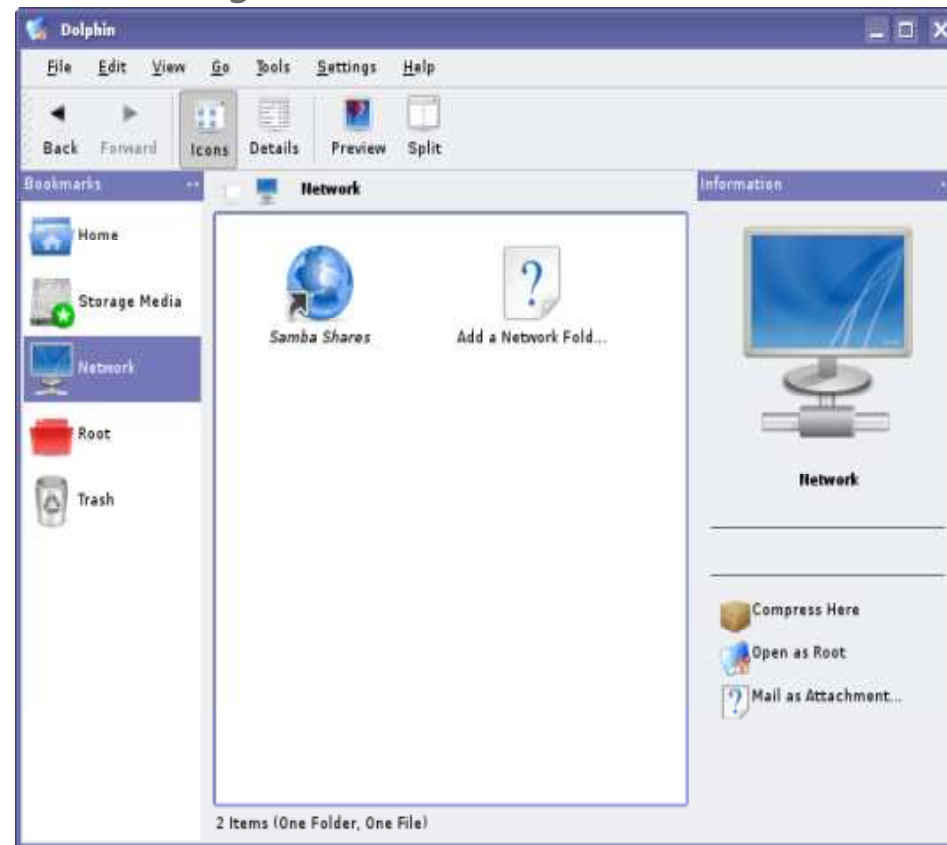


Kon

Wh :
Dealing wit



Dolphin :: File Management





KO 2 :: Content creation suite

Hi :

Integrated

Covers t

Extensive application scope

ODF



Wh :

Provides anot

ODF

Fills several application gaps



KDE Edu :: Educational software

Hi :

Collection of 2

Science: KStars and Kal

Language and geograp

Younger c



Wh :

Getting FOSS into sc

Yout FOSS too



KDE Games :: Fun fun fun!

Hi :

Improved artwor

Good selection of lig



Wh :

All wor



KDE Games :: Fun fun fun!





An

A

Amaro , Kaffeine, Digi , Kate, KWrite, KSnaps , KJots,
KDevelop, Kopete, RDP/VNC/N , KC ,
KWin/Composite

Bin ings: Javascript, Java, P thon, Rub , C#

Ba n s: GStreamer, Xine, NMM, HAL



Get involved!



Getting In

Don

Promotional wor

Documentation

Translation

Artwor

Web sites

User support

Software development



Getting In

Engaging the communit

Email: <http://>

IRC: #kde-devel, #kde-artists, #kde-promo, etc

Installing KDE4

<http://developer>



Q

Aaron Seigo

Software Developer, KDE e

Sponsored by Trolltech